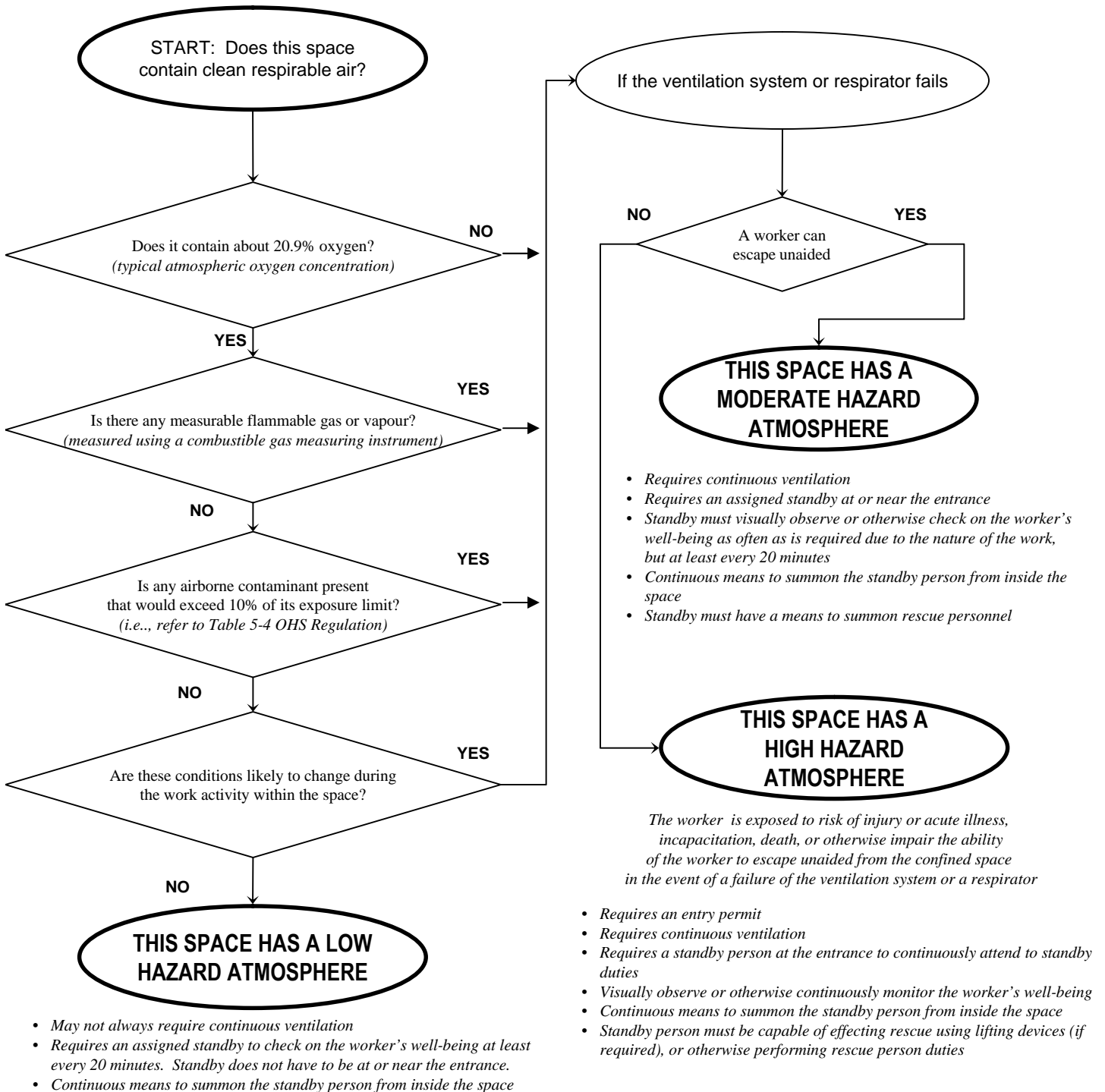


ATMOSPHERIC HAZARD DETERMINATION

STEP 2: What is the atmospheric hazard rating for this confined space?



Where a confined space is identified, a written hazard assessment must be completed. This hazard assessment must consider the conditions that exist prior to entry and those which may develop inside the space during the work activity. Written procedures must be developed specifying the means to eliminate or minimize all hazards likely to prevail. Refer to Part 9 – OHS Regulation for specific requirements and additional details.